

durability
dependability

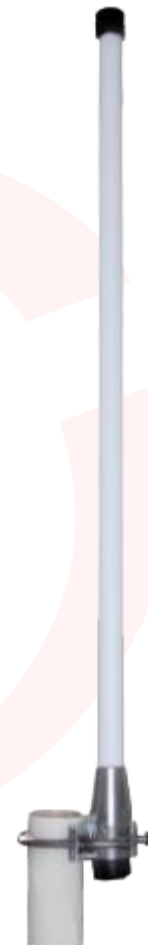
At **RDA Solutions, LLC**, we value our customers feedback. We are consistently working with engineers to develop a line of Omni Antennas that are specifically designed to withstand the many rigors of the oil and gas industry.

We pride ourselves in service before, during and after the sale.

Introducing the

RDA Omni 900-9 Antenna

- Superior Performance
- Omni directional
- Rugged design



Electrical Specs:

| | |
|---------------------------|-----------------------|
| Frequency Range | 824-960 /1710-2170MHz |
| Impedance | 50Ohm |
| VSWR | less than 1.5(916MHz) |
| Gain | 6 dBi |
| Polarization | Vertical |
| Radiation | Omni |
| Maximum Power input watts | 100 W |
| Horizontal Beam Width | 360° |
| Vertical Beam Width | 15° |

Mechanical Specs:

| | |
|-------------------------------|-------------------|
| Height | Ø16×540mm (21.3") |
| Termination | N Female |
| Radome Material | Fiberglass |
| Material of Hardware-supplied | Aluminum Alloy |
| Hole Pole Diameter | Ø25-Ø40 m |

