

durability
dependability

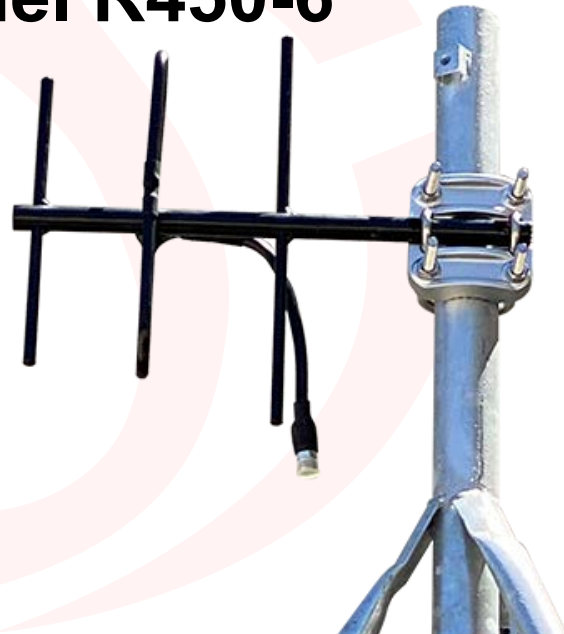
At **RDA Solutions, LLC**, we value our customers feedback. We are consistently working with engineers to develop a line of Yagi Antennas that are specifically designed to withstand the many rigors of the oil and gas industry.

We pride ourselves in service before, during and after the sale.

Introducing the

RDA Wave Model R450-6

Black Aluminum Alloy
Welded 450-470MHz, 7 dBi
N female



Electrical Specs:

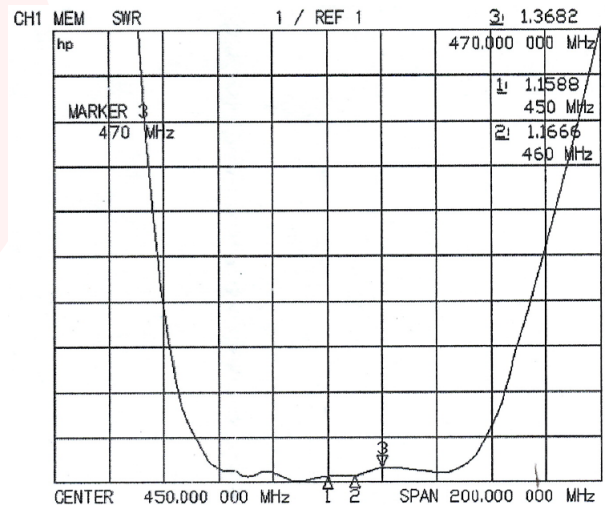
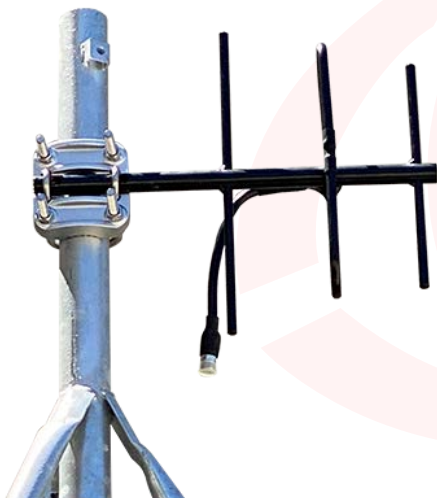
Frequency Range	450-470 MHz
Impedance	50Ohm
VSWR	less than 1.5
Gain	7 dBi
Polarization	Horizontal or Vertical
Horizontal 3dB Beam Width	82°
Vertical 3dB Beam Width	65°
Front To Back Ratio	≥10 dB
Lighting Protection	Direct Ground
Connector	N-Female
Maximum Power Input-watts	250 W

Mechanical Specs:

Dimensions	16"X14"X2.8"
Cable length/Type	400 LMR
Max. Wind Load	135 MPH

RDA Wave Model R450-6

Black Aluminum Alloy Welded
450-470MHz, 7 dBi N female



VSWR:

