

durability  
dependability

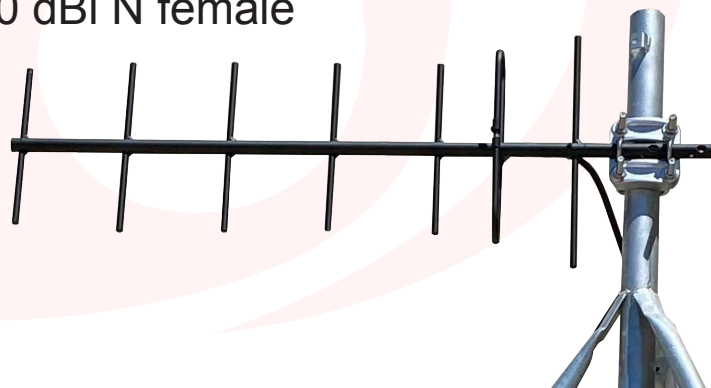
At **RDA Solutions, LLC**, we value our customers feedback. We are consistently working with engineers to develop a line of Yagi Antennas that are d gas industry.

We pride ourselves in service before, during and after the sale.

Introducing the

## RDA Wave Model R450-10

7-element Black Aluminum Alloy  
Welded Yagi Antenna,  
450-470MHz, 10 dBi N female



## Electrical Specs:

Frequency Range	450-470 MHz
Impedance	50Ohm
VSWR	less than 1.5
Gain	10 dBi
Polarization	Horizontal or Vertical
Horizontal 3dB Beam Width	56°
Vertical 3dB Beam Width	46°
Front To Back Ratio	≥20 dB
Lighting Protection	Direct Ground
Connector	N-Female
Maximum Power Input-watts	250 W

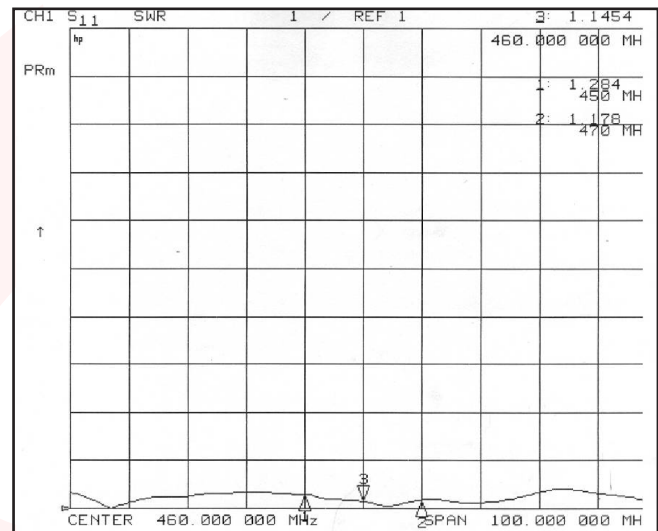
## Mechanical Specs:

Dimensions(LxWxD)	39"x14"x2.8"
Coaxial Cable	400 LMR
Length of cable	19"
Wind Load Max	135 mph



### RDA Wave Model R450-10

7-element Black Aluminum Alloy  
Welded Yagi Antenna,  
450-470MHz, 10 dBi N female



### VSWR:

