

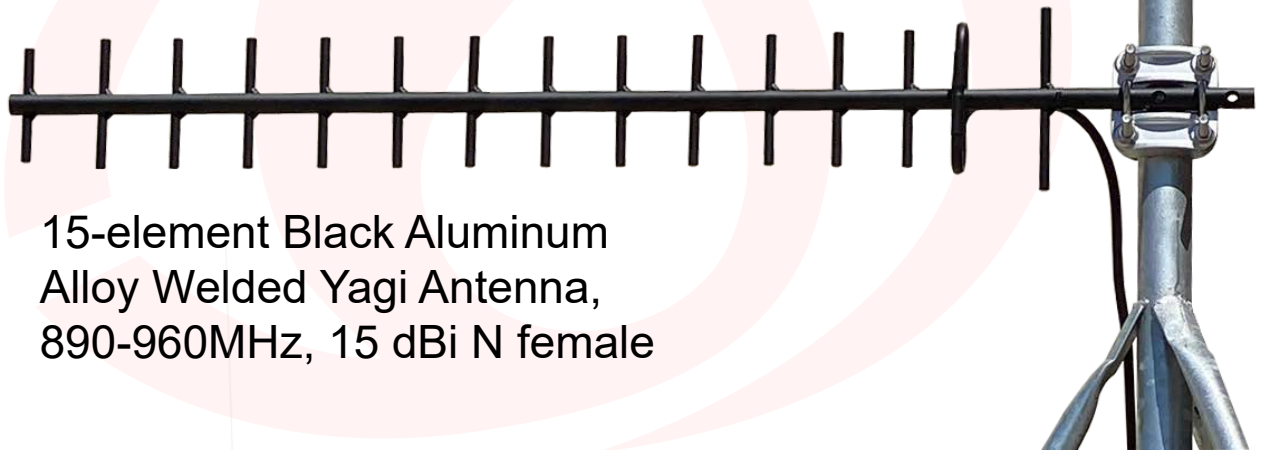
durability
dependability

At **RDA Solutions, LLC**, we value our customers feedback. We are consistently working with engineers to develop a line of Yagi Antennas that are specifically designed to withstand the many rigors of the oil and gas industry.

We pride ourselves in service before, during and after the sale.

Introducing the

RDA Wave Model D900-15



15-element Black Aluminum
Alloy Welded Yagi Antenna,
890-960MHz, 15 dBi N female



Electrical Specs:

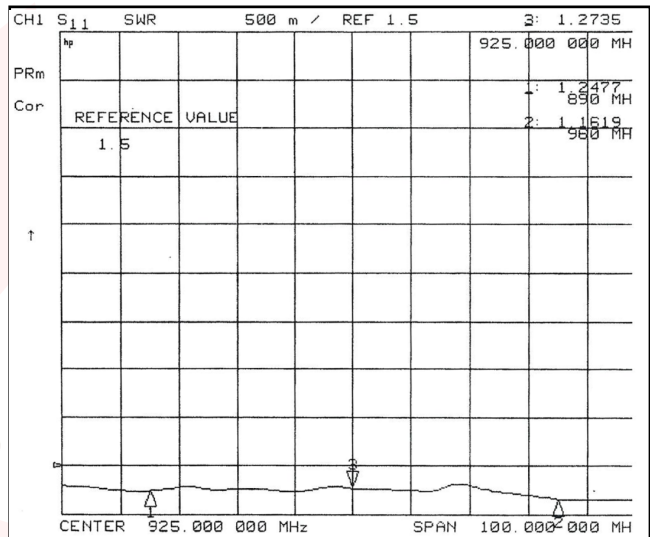
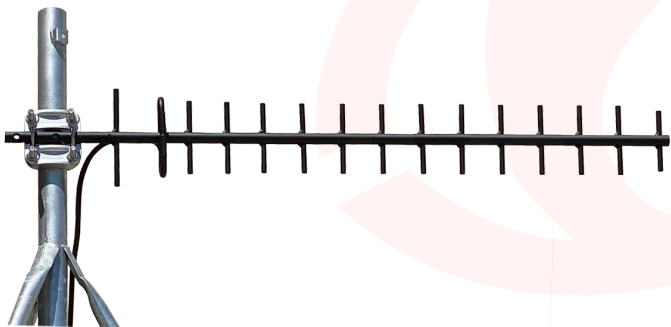
Frequency Range	890-960 MHz
Impedance	50Ohm
VSWR	less than 1.5
Gain	15 dBi
Polarization	Horizontal or Vertical
Horizontal 3dB Beam Width	30°
Vertical 3dB Beam Width	33°
Front To Back Ratio	≥18 dB
Lighting Protection	Direct Ground
Connector	N-Female
Maximum Power Input-watts	200 W

Mechanical Specs:

Length	46.06"
Cable length/Type	19" 400 LMR
Max. Wind Load	135 MPH
Mounting Hardware	Ø40~Ø60 mm

RDA Wave Model D900-15

15-element Black Aluminum Alloy Welded Yagi Antenna, 890-960MHz, 12 dBi N female



VSWR:

